

When using SJAMs, it is very common to want to filter or limit records for different users. All of these users are still part of the SJAMs replica set, but only have access to records determined by a filter in a partial replica....

The following are the steps necessary to create a filtered partial replica

Step #1 Open the employees table in any SJAMs BE and print it. It should look as:

It is recommended that there is a Direct Employee entry. If there is not, please type directly into the table now.

EmployeeID	FirstName	LastName	Title	Extension	WorkPhone	Sales	SalesID
-2032909520	Darlene	Smith	dsmith@sjams.com			DR	DR
-1541303636	Jeff	Doe	jdoe@sjams.com			JB	JB
-926221513	Bill	Lam	blam@sjams.com			BL	BL
172794955	Ellen	Tyco	ereily@sjams.com			ER	ER
573610706	Margaret	Doles	mokeefe@sjams.com			MO	MO
1129581803	Katie	Heavy	koberti@sjassoc.com			KO	KO
1396830686	Doug	Williast	dwilliast@sjams.com			DM	DM
1415654421	Rob	Ballast	rballas@sjams.com			RW	RW
1542383718	SJAMs	Direct				Direct	Direct
*(AutoNumber)							

Now it is time to distribute the application to the remote users. Before SJAMs can be distributed, it must be determined which filters will be set for each sjamsbe that is created. The filter set which Company names (and related data) will be partitioned into the sjamsbe.

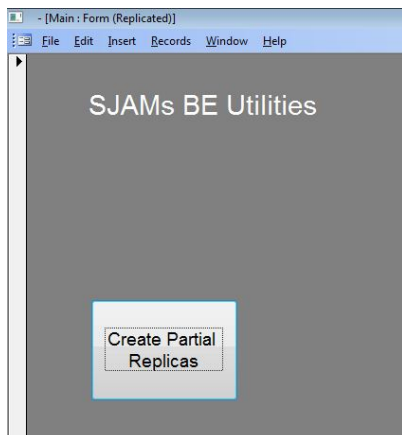
Let's use the Employees Table above as an example. Let's make a sjamsbe for Darlene Smith.

It is important to note two Employeeid Numbers:

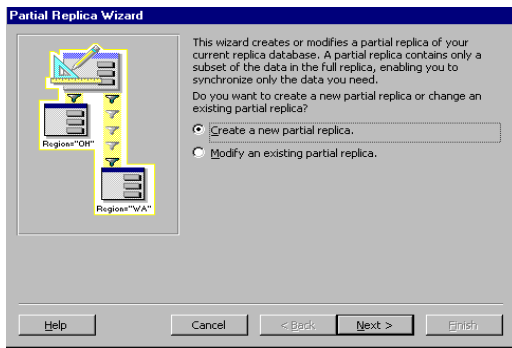
Darlene Smith: Employeeid # = -2032909520
 Direct: Employeeid# = 1542383730

Step #2

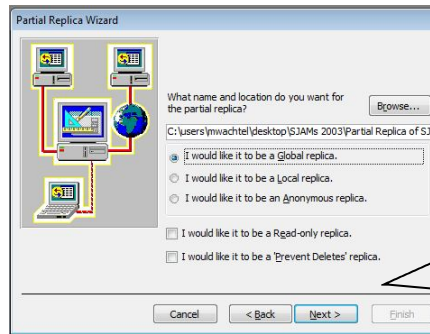
Open any SJAMs BE and the following form will open.... Click on the Create Partial Replica button .



Step #3

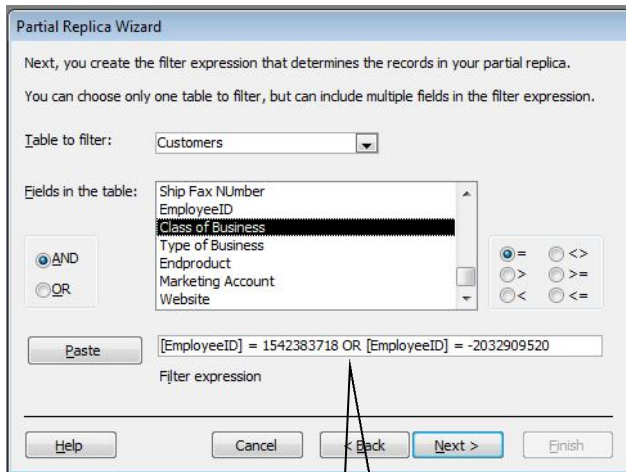


Make sure "Create a new partial replica" is selected and click Next



All Partial Replicas need to named sjamsbe in order to work with SJAMs

Name the new partial replica sjamsbe, Click Next



Make sure there is an 'OR'

#1: Change the Table to Filter to **Customers**

#2: Make sure the **OR** is selected, not **AND**

#3: Double Click on the **Employeeid** field and the following should show in the Filter expression: [EmployeeID] =

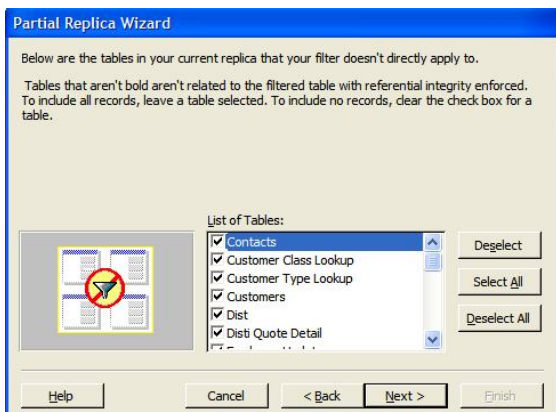
#4: Type in the Direct Employeeid number

#5: Double Click on the **Employeeid** field again and the following should show:

[Employeeid] = 1542383730 or [Employeeid] =

#6 Type in Darlene Smith's Employeeid number

Click Next



Click Next



Click Next